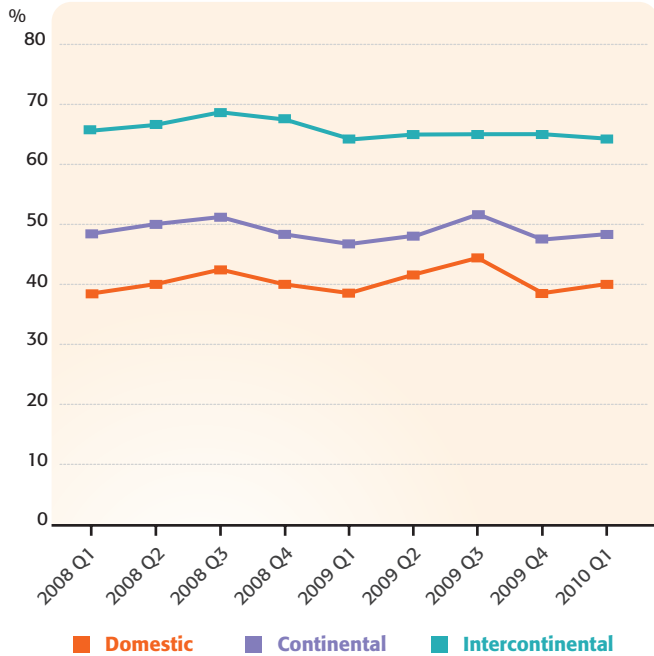


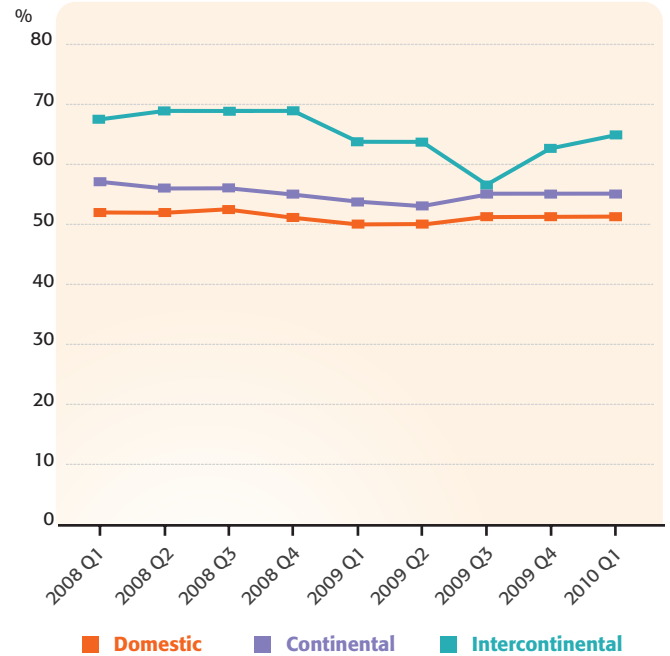


**AIR BOOKINGS MADE 14+ DAYS IN ADVANCE**

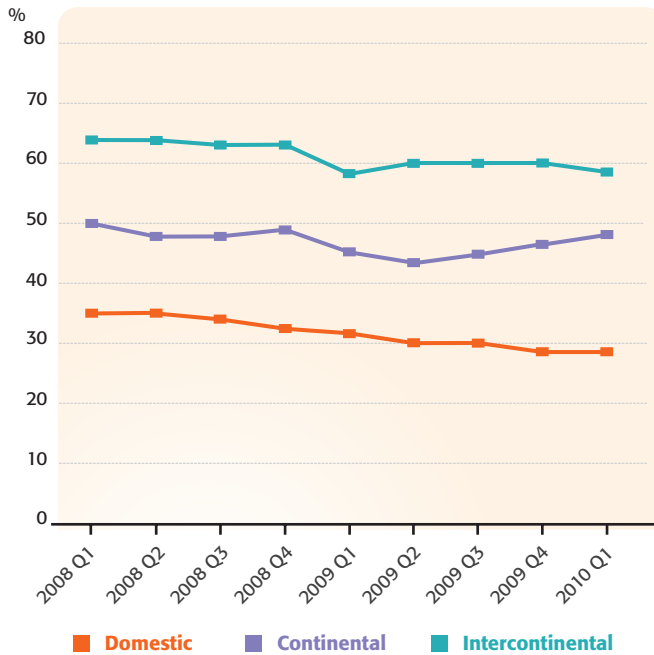
**Europe, Middle East & Africa**



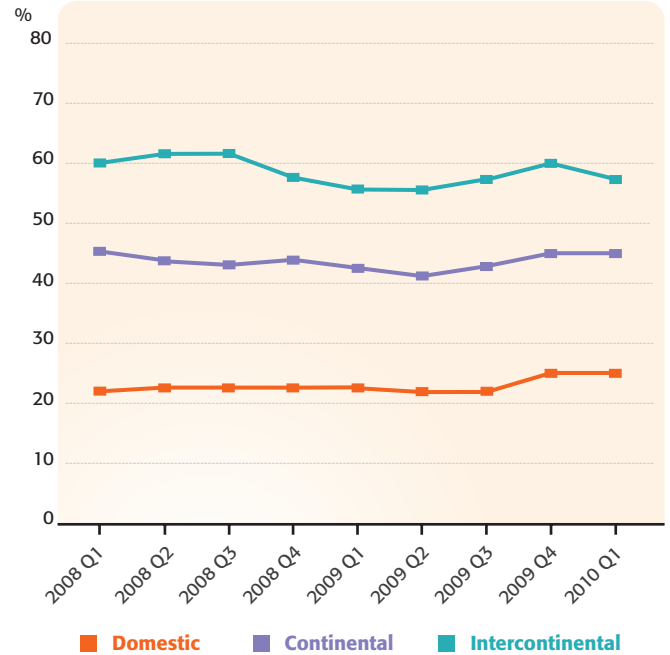
**North America**



**Asia Pacific**



**Latin America**



Source: CWT client data, worldwide  
 Continental = travel originating in any given region to international destinations within that same region  
 Intercontinental = travel originating in any given region to destinations outside of that region